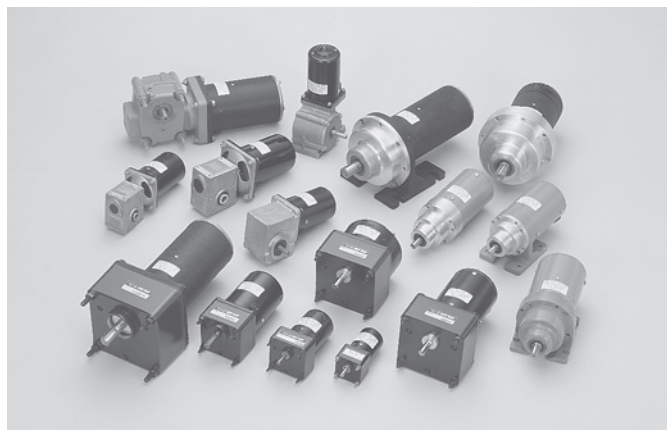


# SUMMARY OF D.C. GEARED MOTORS

## 自動化、省力化機器に、特殊電装のD.C.ギヤードモータ

### 小型軽量、高性能、高品質、多機種、多用途

TOKUSHUDENSO D.C. Geared Motors for your Automatic and Laborsaving Equipments.  
Small-Sized and Light, High Performance, High Quality, and Versatile Motor.



#### 特長

- 1.用途に応じた設計ができる様に平ギヤタイプ、遊星ギヤタイプ及びウォームギヤタイプとそれぞれシリーズで揃えております。
- 2.マグネットモータを使用していますのでイナーシャが少なく、起動停止の応答性に優れています。
- 3.小型軽量で高トルクを出せますので産業機器、ロボット等、広範囲にわたりご使用いただいております。
- 4.正逆転が電源の極性を変えるだけで簡単にでき又、スピードも電圧を可変するだけで簡単に変わります。
- 5.長年の実績から、性能、品質共に安定しており安心してご使用いただけます。
- 6.定格電圧は、D.C. 12V、24Vが標準ですが他の電圧仕様もご希望により製作致しております。
- 7.回転制御用にモータ仕様に合わせたコントローラも製作しておりますのでお問い合わせ下さい。

#### 注意事項

- 1.電源は純直流（電池電源）を標準としております。整流電源等のリップルの多い電源を使用する場合は、モータの特性、振動、騒音、耐久及び温度上昇に影響しますので定格トルクの60%以下で使用するか、リップルを取る回路を入れてご使用下さい。
- 2.出力軸トルクは最大許容トルクを示します。変動負荷及び起動トルクの大きい場合、又は連続使用で耐久性を必要とする場合はランクが上の機種を選定して下さい。
- 3.回転方向は正逆両用ですから、リード線又は端子の極性を逆に接続すれば逆回転致します。但し、急速な正逆転は避ける様設計して下さい。
- 4.モータ外径φ40のものは内部構造上、D.C. 100V用は製作できかねますのでご了承下さい。
- 5.D.C. 48V以上の高い電圧仕様の場合は安全上から、モータ毎にアースをとってご使用下さい。
- 6.形状、寸法等は簡易寸法を記入してあります。又、予告なく変更することもあります。

#### Features

- 1.We have stocked various series motors which are the spur gear type, the planetary gear type and worm gear type.
- 2.Since the magnet motor is used to the gear motors, inertia motion is very low and also the starting and stopping responses are excellent.
- 3.Since the motors are small size, light weight and high torque, the motors are being used for industrial machines and robots for wide purposes.
- 4.If the connections of the power supply poles are reversed, revolution direction can easily be changed to either clockwise or counterclockwise. Also revolution can easily be converted by variable voltage of power supply.
- 5.The motors can safely be used because we have great experience in motor production for a long time and also both performance and quality are stabilized.
- 6.The rated voltage to be applied as the standard is D.C.12V or 24V, If requested, we are prepared to manufacture a special motor which works on a different voltage.
- 7.Please ask us as we produce the controller to meet the specific motors for the controlled revolution.

#### Special Notes :

- 1.The standard power supply is simple direct current that is battery power supply. In case of use the power supply which has many ripples and commutation power supply, etc., the motors have effects on characteristic, vibration, noise, durability and increasing temperature. Therefore, they are used under 60% of the rated torque or fitted with a circuit which eliminates the ripple.
- 2.The output shaft torque is same as the max. allowable torque. In case, the fluctuating load and start torque are large or lengthy duration is required, the high ranking models should be selected.
- 3.The direction of the revolution is both clockwise and counterclockwise. Therefore, if lead wire or poles of terminal are connected with opposition of each side, the direction becomes reverse direction. However, please do not make the direction of clockwise or counterclockwise rapidly.
- 4.The motor, outside dia. 40mm φ (1.57" φ), cannot be produced for D.C .100V due to internal restraints.
- 5.Please ground the motor case when the high voltage motors which are specified more than D.C.48V as a safety procedure.
- 6.The shape and dimensions of the motors are briefly illustrated and summarized in the catalog. Therefore, they may be altered without notice.

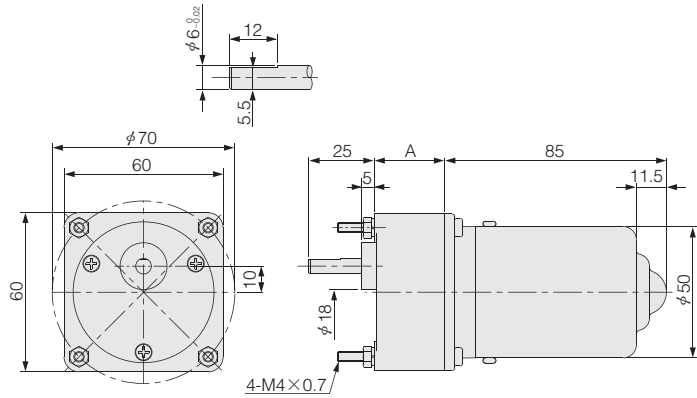


# D.C. GEARED MOTORS (SPUR GEAR)

TD2511G



SHAFT DETAIL



## D.C. MOTORS

## SPEED-TORQUE CHARACTERISTICS

Part No.	Voltage	Torque		Current	Speed	Output	Duty
		kgf·cm	mN·m	Amp	r/min	Watts	
TD2511G-	12E	0.22	21.5	1	1800	4	Cont.
	24E			0.5			
	12H	0.26	25.5	1	1500		
	24H			0.5			

## MODEL-6BH D.C. GEARED MOTORS

## SPEED-TORQUE CHARACTERISTICS

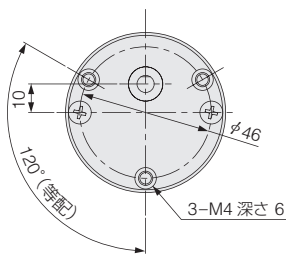
Model	Torque		Reduction Ratio	Speed	Length A	Mass
	kgf·cm	N·m		r/min		
TD2511G-	□□E □□H	-6B5H	5	360	27	0.7~0.8
				300		
	□□E □□H	-6B15H	15	120		
				100		
	□□E □□H	-6B30H	30	60		
				50		
	□□E □□H	-6B50H	50	36		
				30		
	□□E □□H	-6B100H	100	18		
				15		
	□□E □□H	-6B150H	150	12		
				10		
	□□E □□H	-6B300H	300	6		
				5		

上記以外のギヤー比については別途ご相談ください。

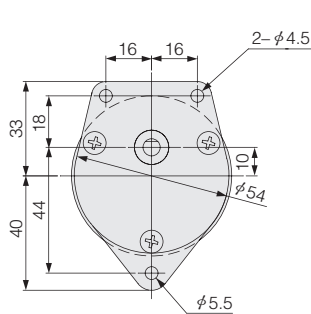
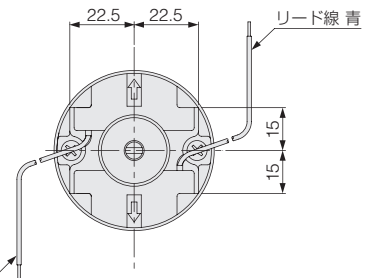
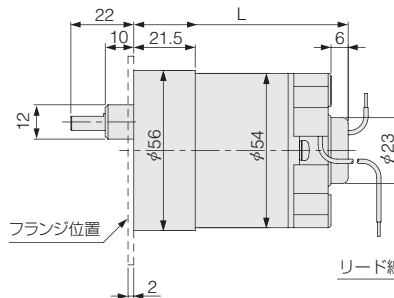
Please ask us about the gear ratio except for the above separately, too.

# D.C. GEARED MOTORS (SPUR GEAR)

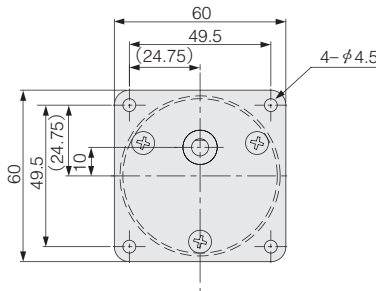
M40G



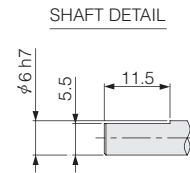
フランジ00タイプ



フランジ01タイプ



フランジ02タイプ

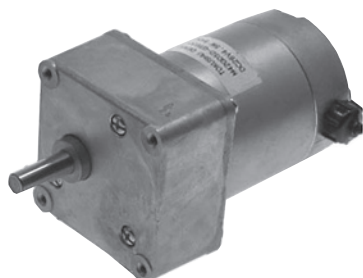


Model Motor-Gear	Voltage	Torque		Current	Output	Duty	Reduction Ratio	Speed r/min	Length-L mm	Mass kg
		kgf·cm	mN·m	Amp	Watts					
M490G	26	1	98	0.35	3.7	Cont.	10	360	75	0.45
M491G -00		3	294	0.4			30	120		
M492G -01		6	588				60	60		
M493G -02		7.5	736				75	48		
M494G		1	98		0.37		4.5	10	440	89
M495G -00		3	294	0.41	30			145		
M496G -01		6	588		60			75		
M497G -02		7.5	736		75			60		

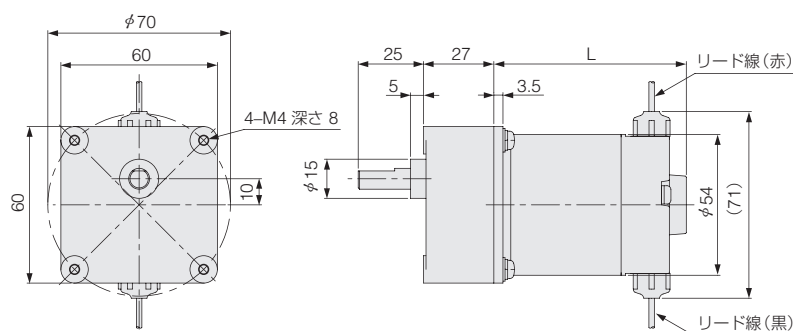
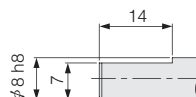
- ギャー一体型です。
- フランジは00タイプ、01タイプ、02タイプがあります。
- **MP** 量産対応品です。数量については別途ご相談ください。
- M40G are integrated gear-head and motor.
- The flange has 00type, 01type and 02type.
- MP=Mass Production type. Please give us an inquiry about minimum quantity.

# D.C. GEARED MOTORS (SPUR GEAR)

M51G



SHAFT DETAIL



## D.C. MOTORS

## SPEED-TORQUE CHARACTERISTICS

Part No.	Voltage	Torque		Current	Speed	Output	Duty
		kgf·cm	mN·m	Amp	r/min	Watts	
M51G01A	12	0.65	63.7	3.2	3000	20	Cont.
M51G20A	24			1.6			

## MODEL-GS D.C. GEARED MOTORS

## SPEED-TORQUE CHARACTERISTICS

Model	Torque		Reduction Ratio	Speed	Length-L	Mass
	kgf·cm	N·m		r/min		
M51G01A M51G20A	-GS5	2.8	0.28	5	600	74 0.7
	-GS10	5.6	0.55	10	300	
	-GS20	11.2	1.10	20	150	
	-GS30	15.0	1.47	30	100	
	-GS50	23.7	2.32	50	60	
	-GS60	28.5	2.79	60	50	
	-GS75	30.0	2.94	75	40	
	-GS100			100	30	
-GS150	150			20		
-GS180			180	17		

• 上記以外に下記のギヤー比も可能です。

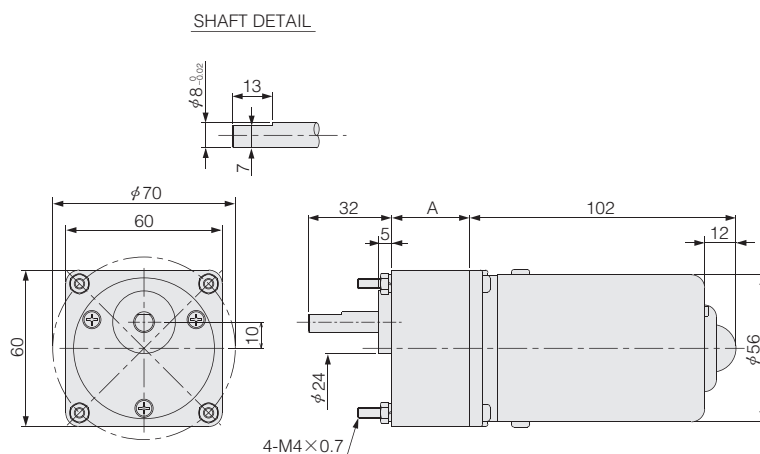
•  $\frac{1}{15}$ ,  $\frac{1}{25}$ ,  $\frac{1}{36}$ ,  $\frac{1}{90}$ ,  $\frac{1}{120}$

• 量産対応品です。数量については別途お問い合わせください。

• MP=Mass Production type. Please give us an inquiry about minimum quantity.

# D.C. GEARED MOTORS (SPUR GEAR)

TD2586G



## D.C. MOTORS

## SPEED-TORQUE CHARACTERISTICS

Part No.	Voltage	Torque		Current	Speed	Output	Duty	
		kgf·cm	mN·m	Amp	r/min	Watts		
TD2586G-	12J	12	0.54	53	1.5	1800	10	Cont.
	24J	24						
	12F	12	0.65	64	1.5	1500		
	24F	24						

## MODEL-6BG D.C. GEARED MOTORS

## SPEED-TORQUE CHARACTERISTICS

Model	Motor-Gear	Torque		Reduction	Speed	Length A	Mass	
		kgf·cm	N·m	Ratio	r/min	mm	kg	
TD2586G-	□□ J □□ F	-6B5G	2.2	0.21	5	360	30	1.1~1.3
			2.6	0.26		300		
	□□ J □□ F	-6B15G	6.6	0.64	15	120		
			7.9	0.77		100		
	□□ J □□ F	-6B30G	11.8	1.16	30	60	35	
			14.2	1.40		50		
	□□ J □□ F	-6B50G	17.8	1.75	50	36	42	
			21.5	2.10		30		
	□□ J □□ F	-6B100G	25	2.45	100	18		
						15		
	□□ J □□ F	-6B150G			150	12		
						10		

上記以外のギヤー比については別途ご相談ください。

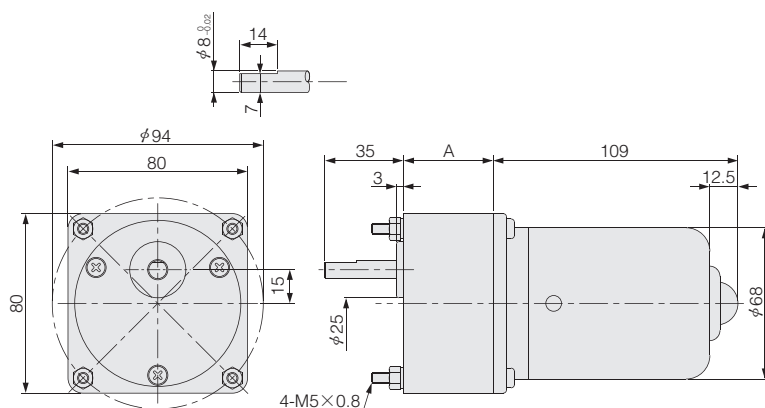
Please ask us about the gear ratio except for the above separately, too.

# D.C. GEARED MOTORS (SPUR GEAR)

TD2444G



SHAFT DETAIL



## D.C. MOTORS

## SPEED-TORQUE CHARACTERISTICS

Part No.	Voltage	Torque		Current	Speed	Output	Duty	
		kgf·cm	mN·m	Amp	r/min	Watts		
TD2444G-	12E	12	0.83	81.3	2.2	1800	15	Cont.
	24E	24						
	12H	12	1	98.1	2.2	1500		
	24H	24						

## MODEL-8BH D.C. GEARED MOTORS

## SPEED-TORQUE CHARACTERISTICS

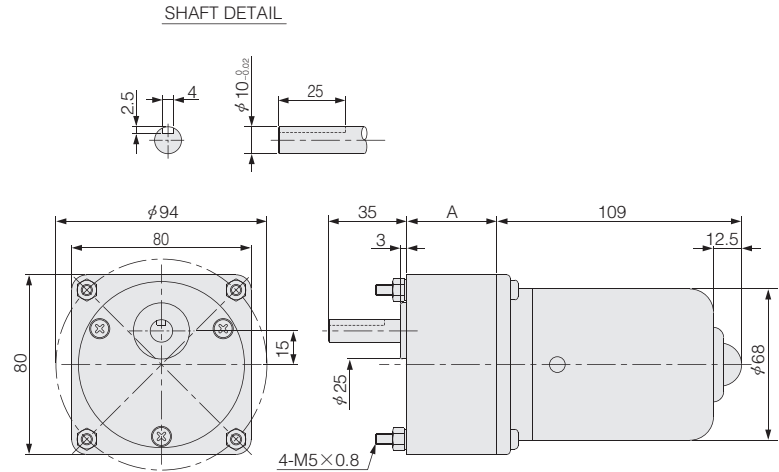
Model	Motor-Gear	Torque		Reduction Ratio	Speed	Length A	Mass	
		kgf·cm	N·m		r/min	mm	kg	
TD2444G-	□□E □□H	-8B5H	3.4	0.33	5	360	40	1.4~1.8
			4.1	0.40		300		
	□□E □□H	-8B15H	10.1	0.99	15	120		
			12.2	1.19		100		
	□□E □□H	-8B30H	18.2	1.78	30	60		
			21.9	2.15		50		
	□□E □□H	-8B50H	30.3	2.97	50	36		
			36.5	3.58		30		
	□□E □□H	-8B100H	40	3.92	100	18		
						15		
	□□E □□H	-8B150H			150	12		
						10		

上記以外のギヤー比については別途ご相談ください。

Please ask us about the gear ratio except for the above separately, too.

# D.C. GEARED MOTORS (SPUR GEAR)

TD2444G



## D.C. MOTORS

## SPEED-TORQUE CHARACTERISTICS

Part No.	Voltage	Torque		Current	Speed	Output	Duty
		kgf·cm	mN·m	Amp	r/min	Watts	
TD2444G-	612	12	1.2	3.4	2000	25	Cont.
	624	24		1.7			
	12J	12		3.2	1800	22	
	24J	24		1.6			
	12F	12	1.5	3.2	1500	23	
	24F	24		1.6			

## MODEL-8BG D.C. GEARED MOTORS

## SPEED-TORQUE CHARACTERISTICS

Model	Motor-Gear	Torque		Reduction Ratio	Speed	Length A	Mass
		kgf·cm	N·m		r/min		
TD2444G-	6 □ □ □ □ J □ □ F	-8B5G	4.9	0.48	5	400	1.4~1.8
						360	
						300	
	6 □ □ □ □ J □ □ F	-8B15G	14.6	1.43	15	133	
						120	
						100	
	6 □ □ □ □ J □ □ F	-8B30G	26.3	2.58	30	67	
						60	
						50	
	6 □ □ □ □ J □ □ F	-8B50G	39.6	3.88	50	40	
						36	
						30	
	6 □ □ □ □ J □ □ F	-8B100G	79.2	7.77	100	20	
						18	
						15	
	6 □ □ □ □ J □ □ F	-8B150G	80	7.85	150	13	
						12	
						10	

上記以外のギヤー比については別途ご相談ください。  
Please ask us about the gear ratio except for the above separately, too.

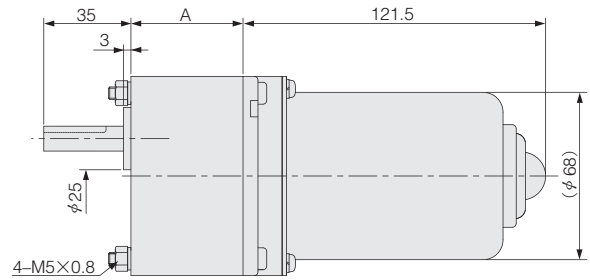
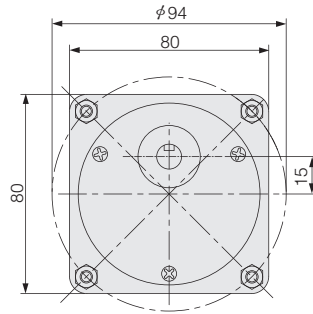
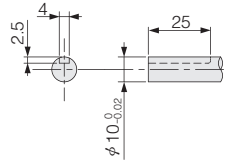


# D.C. GEARED MOTORS (SPUR GEAR)

TD3338G



SHAFT DETAIL



## D.C. MOTORS

## SPEED-TORQUE CHARACTERISTICS

Part No.	Voltage	Torque		Current	Speed	Output	Duty	
		kgf·cm	mN·m	Amp	r/min	Watts		
TD3338G—	180	100	1.2	118	0.33	1800	22	Cont.
	150		1.5	147	0.36	1500	23	

## MODEL-8BG D.C. GEARED MOTORS

## SPEED-TORQUE CHARACTERISTICS

Model	Motor-Gear	Torque		Reduction Ratio	Speed	Length A	Mass
		kgf·cm	N·m		r/min		
TD3338G—	180 —8B5G	4.9	0.48	5	360	32	1.6~1.8
					300		
	180 —8B15G	14.6	1.43	15	120		
					100		
	180 —8B30G	26.3	2.58	30	60	45	
					150 —8B30G		
	180 —8B50G	39.6	3.88	50	36		
					150 —8B50G		
	180 —8B100G	79.2	7.77	100	18		
					150 —8B100G		
	180 —8B150G	80	7.85	150	12		
					150 —8B150G		

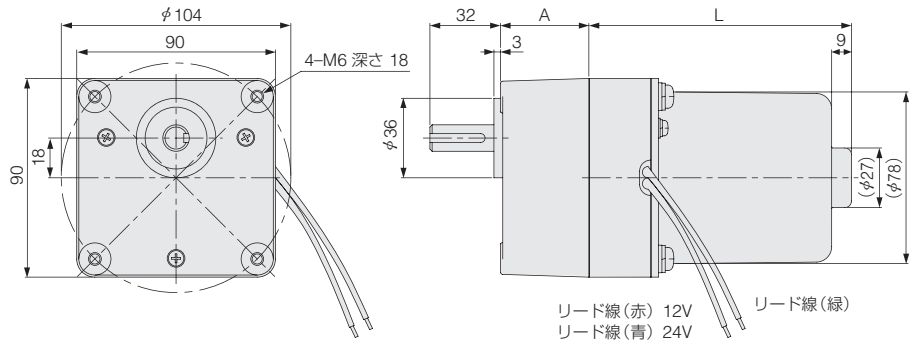
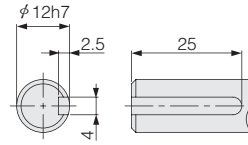
定格電圧が230Vの製品もあります。その他の電圧の製品もご希望により製作致します。  
Motors of rated voltages of 230V have been produced for sale. Also, motors of other various rated voltage can be produced per your technical specifications.

# D.C. GEARED MOTORS (SPUR GEAR)

M76G



SHAFT DETAIL



D.C. MOTORS

SPEED-TORQUE CHARACTERISTICS

Part No.	Voltage	Torque		Current	Speed	Output	Duty
		kgf·cm	N·m	Amp	r/min	Watts	
M76G02A	12	3	0.29	7.4	2000	60	Cont.
M76G05A	24			3.6			

MODEL-GB·GC D.C. GEARED MOTORS

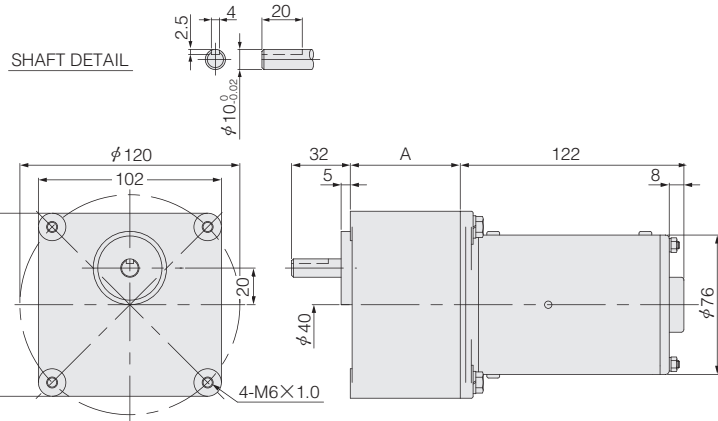
SPEED-TORQUE CHARACTERISTICS

Model Motor-Gear	Torque		Reduction Ratio	Speed r/min	Gear Length-A mm	Length-L mm	Mass kg
	kgf·cm	N·m					
M76G02A M76G05A	-GB5	13	1.27	5	400	45	2.7
	-GB10	25	2.45	10	200		
	-GB25	65	6.37	25	80		
	-GB30	71	6.96	30	67	60	119
	-GB50	100	9.81	50	40		
	-GB60			60	33		
	-GB75			75	27		
	-GB100			100	20		
	-GB150			150	13		
	-GB180			180	11		
	-GC5	13	1.27	5	400	45	2.7
	-GC10	25	2.45	10	200		
	-GC25	65	6.37	25	80		
	-GC30	71	6.96	30	67	60	119
	-GC50	119	11.7	50	40		
	-GC60	142	13.9	60	33		
	-GC75	150	14.7	75	27		
	-GC100			100	20		
-GC150	150			13			
-GC180	180			11			

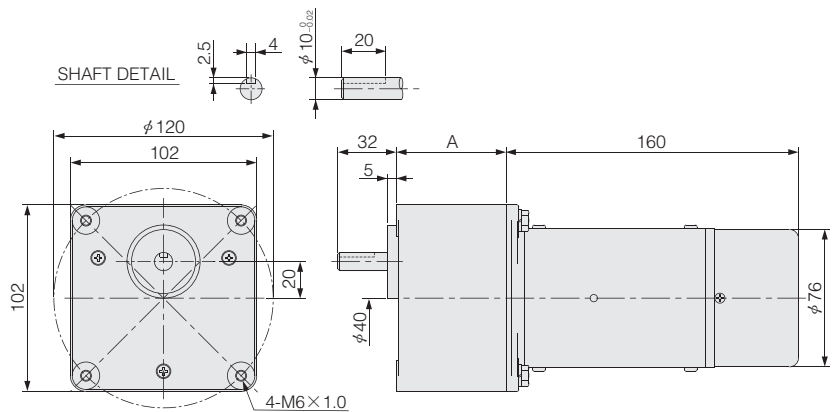
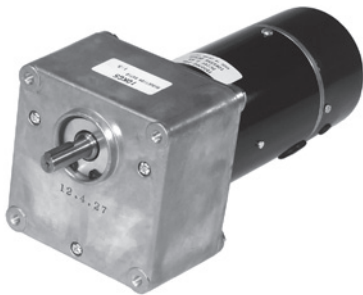
- 上記以外に下記のギヤー比も可能です。
- 1/15, 1/20, 1/36, 1/90, 1/120
- 量産対応品です。数量については別途お問い合わせください。
- MP=Mass Production type. Please give us an inquiry about minimum quantity.

# D.C. GEARED MOTORS (SPUR GEAR)

## TD2557G



## 電磁ブレーキ付 [WITH BRAKE] TD3236G



無励磁作動ブレーキ [制動用] NEGATIVE ACTUATED TYPE ELECTROMAGNETIC BRAKE [FOR BRAKING]	Static Torque		Coil (20°C)		
	kgf·cm	N·m	Voltage	Amp	Watts
	5	0.5	24	0.29	7

### D.C. MOTORS

### SPEED-TORQUE CHARACTERISTICS

Part No.	Voltage	Torque		Current	Speed	Output	Duty
		kgf·cm	N·m	Amp	r/min	Watts	
TD2557G	-12H	2.6	0.25	5.2	1500	40	Cont.
	-24H			2.6			
	-00H			0.65			
TD3236G	-24H			2.6			

### MODEL-10KG D.C. GEARED MOTORS

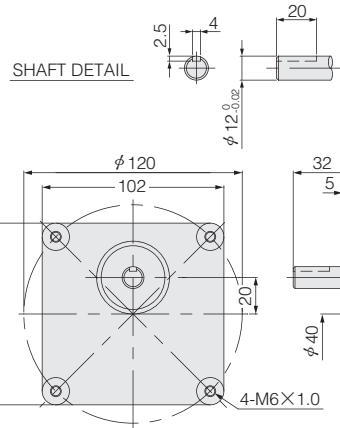
### SPEED-TORQUE CHARACTERISTICS

Model	Torque		Reduction Ratio	Speed	Gear Length-A	Weight		
	kgf·cm	N·m		r/min				
TD2557G-□□H	-10KG5	11	1.08	5	60	TD2557G 2.6~2.85		
	-10KG12.5	26	2.55	12.5				
	-10KG15	32	3.14	15				
	-10KG25	53	5.20	25				
	-10KG30	63	6.18	30				
	TD3236G-24H	-10KG50	95	9.32			50	TD3236G 3.0~3.25
		-10KG75	100	9.81			75	
-10KG100		100						
-10KG150		150						

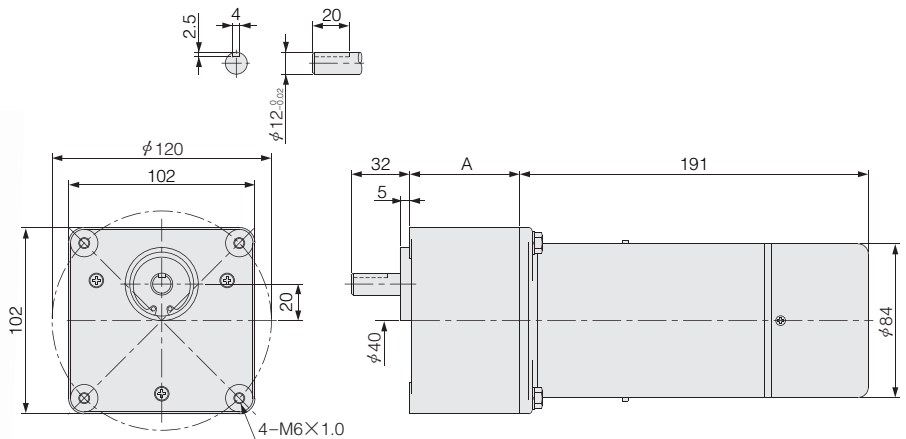
上記以外のギヤー比については別途ご相談ください。  
Please ask us about the gear ratio except for the above separately, too.

# D.C. GEARED MOTORS (SPUR GEAR)

## TD2542G



## 電磁ブレーキ付 [WITH BRAKE] TD3116G



無励磁作動ブレーキ [制動用] NEGATIVE ACTUATED TYPE ELECTROMAGNETIC BRAKE [FOR BRAKING]	Static Torque		Coil (20°C)		
	kgf·cm	N·m	Voltage	Amp	Watts
	10	1	24	0.41	10

### D.C. MOTORS

### SPEED-TORQUE CHARACTERISTICS

Part No.	Voltage	Torque		Current Amp	Speed r/min	Output Watts	Duty
		kgf·cm	N·m				
TD2542G	-12F	12	3.9	0.38	7.5	60	Cont.
	-24F	24			3.7		
	-00F	100			0.9		
TD3116G	-24F	24			3.7		

### MODEL-10KGFB D.C. GEARED MOTORS

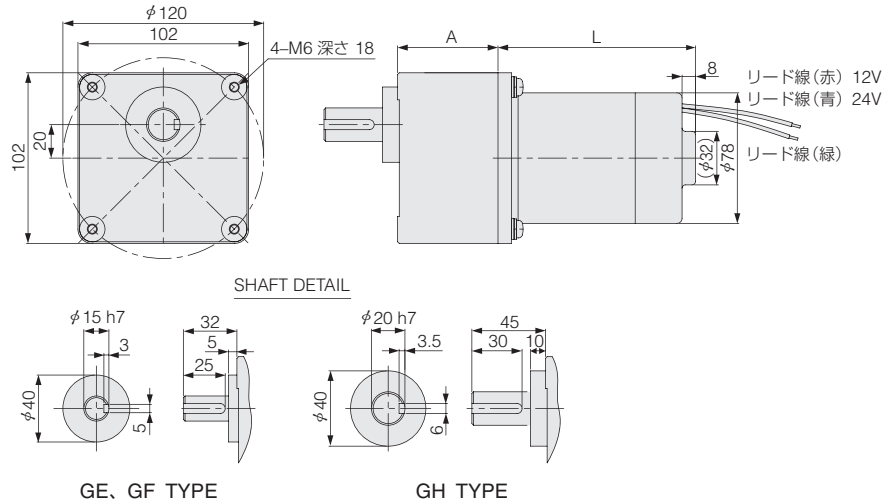
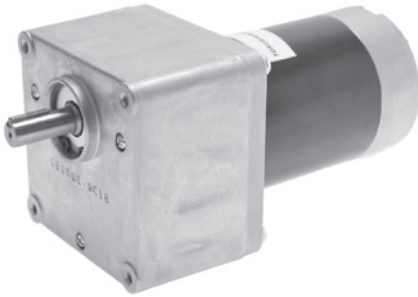
### SPEED-TORQUE CHARACTERISTICS

Model	Torque		Reduction Ratio	Speed r/min	Gear Length-A mm	Weight kg
	kgf·cm	N·m				
TD2542G-□□F	-10KG5FB	16	1.57	5	300	TD2542G 3.8~4.1
	-10KG12.5FB	40	3.92	12.5	120	
	-10KG15FB	47	4.61	15	100	
	-10KG25FB	71	6.96	25	60	
TD3116G-24F	-10KG30FB	85	8.34	30	50	TD3116G 4.5~4.8
	-10KG50FB	142	13.9	50	30	
	-10KG75FB	150	14.7	75	20	
	-10KG100FB			100	15	
	-10KG150FB			150	10	

上記以外のギヤ比については別途ご相談ください。  
Please ask us about the gear ratio except for the above separately,too.

# D.C. GEARED MOTORS (SPUR GEAR)

M75G



リード線 (赤) 12V  
リード線 (青) 24V  
リード線 (緑)

## D.C. MOTORS

## SPEED—TORQUE CHARACTERISTICS

Part No.	Voltage	Torque		Current	Speed	Output	Duty
		kgf·cm	N·m	Amp	r/min	Watts	
M75G	12	12A	3	0.29	2000	60	Cont.
		12H	5	0.49		100	1hr
	24	24A	3	0.29		60	Cont.
		24H	5	0.49		100	

## MODEL—GE·GF·GH D.C. GEARED MOTORS

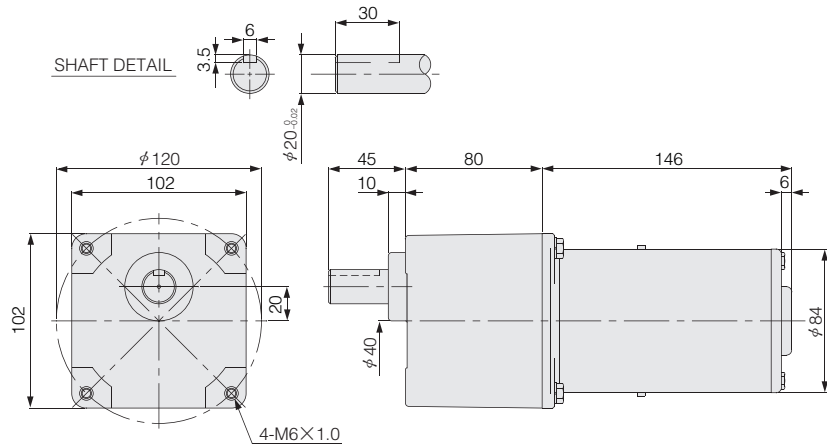
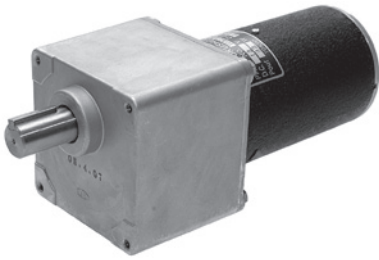
## SPEED—TORQUE CHARACTERISTICS

Model	Torque		Reduction Ratio	Speed r/min	Gear Length-A	Length-L	Mass		
	kgf·cm	N·m							
M75G12A M75G24A	—GE5	13	1.27	5	60	130	3.2~3.5		
	—GE10	25	2.45	10					
	—GE20	51	5.0	20					
	—GE30	71	6.96	30					
	—GE50	118	11.6	50					
	—GE75	150	14.7	75					
	—GE100			100					
	—GE150			150					
	—GE180	180							
	—GF5	13	1.27	5			80	150	4.0~4.4
	—GF10	25	2.45	10					
	—GF20	51	5.0	20					
	—GF30	71	6.96	30					
	—GF50	118	11.6	50					
	—GF75	164	16.1	75					
	—GF100	200	19.6	100					
	—GF150			150					
	—GF180			180					
M75G12H M75G24H	—GH5	21	2.06	5	80	150	4.0~4.4		
	—GH10	43	4.22	10					
	—GH20	86	8.43	20					
	—GH30	118	11.6	30					
	—GH50	197	19.3	50					
	—GH75	273	26.8	75					
	—GH100	365	35.8	100					

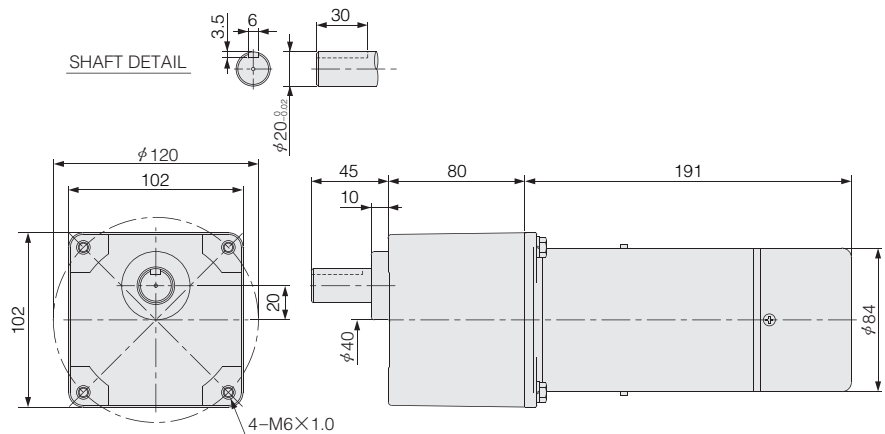
- 上記以外に下記のギヤー比も可能です。
- GE・GFType  $\frac{1}{15}$ ,  $\frac{1}{25}$ ,  $\frac{1}{36}$ ,  $\frac{1}{60}$ ,  $\frac{1}{90}$ ,  $\frac{1}{120}$  GHType  $\frac{1}{15}$ ,  $\frac{1}{25}$ ,  $\frac{1}{36}$ ,  $\frac{1}{60}$ ,  $\frac{1}{90}$
- 量産対応品です。数量については別途お問い合わせください。
- MP=Mass Production type. Please give us an inquiry about minimum quantity.

# D.C. GEARED MOTORS (SPUR GEAR)

## TD3239G



## 電磁ブレーキ付 [WITH BRAKE] TD3402G



無励磁作動ブレーキ [制動用] NEGATIVE ACTUATED TYPE ELECTROMAGNETIC BRAKE [FOR BRAKING]	Static Torque		Coil (20°C)		
	kgf·cm	N·m	Voltage	Amp	Watts
	10	1	24	0.41	10

### D.C. MOTORS

### SPEED-TORQUE CHARACTERISTICS

Part No.	Voltage	Torque		Current	Speed	Output	Duty	
		kgf·cm	N·m	Amp	r/min	Watts		
TD3239G	-12F	12	4.5	0.44	10.4	2000	92	Cont.
	-24F	24			5.2			
	-00F	100			1.3			
TD3402G	-240	24			5.2			

### MODEL - 10K\_K D.C. GEARED MOTORS

### SPEED - TORQUE CHARACTERISTICS

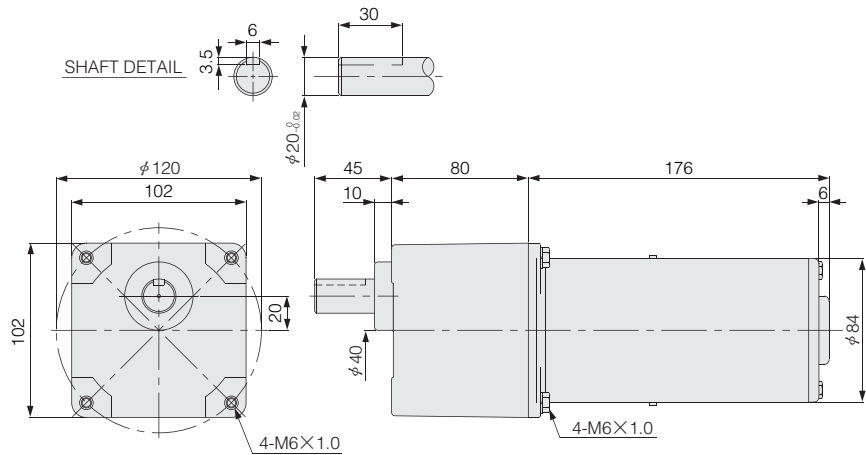
Model	Torque		Reduction Ratio	Speed	Max Torque		Mass			
	kgf·cm	N·m		r/min	kgf·cm	N·m	kg			
TD3239G-□□F	-10K5K	19.3	1.89	5	400	60	5.8	TD3239G 4.3~4.7		
	-10K10K	38.7	3.80	10	200	100	9.8			
	-10K15K	58.0	5.69	15	133	200	19.6			
	-10K20K	77.4	7.59	20	100					
	-10K25K	88.8	8.71	25	80	300	29.4			
	-10K30K	107	10.5	30	67					
TD3402G-240	-10K36K	128	12.6	36	56	400	39.2	TD3402G 5.0~5.5		
	-10K50K	178	17.5	50	40					
	-10K75K	246	24.1	75	27				500	49.0
	-10K90K	296	29.0	90	22					
	-10K100K	329	32.3	100	20					
	-10K150K	493	48.3	150	13					
-10K180K	500	49.0	180	11						

上記以外のギヤ比については別途ご相談ください。

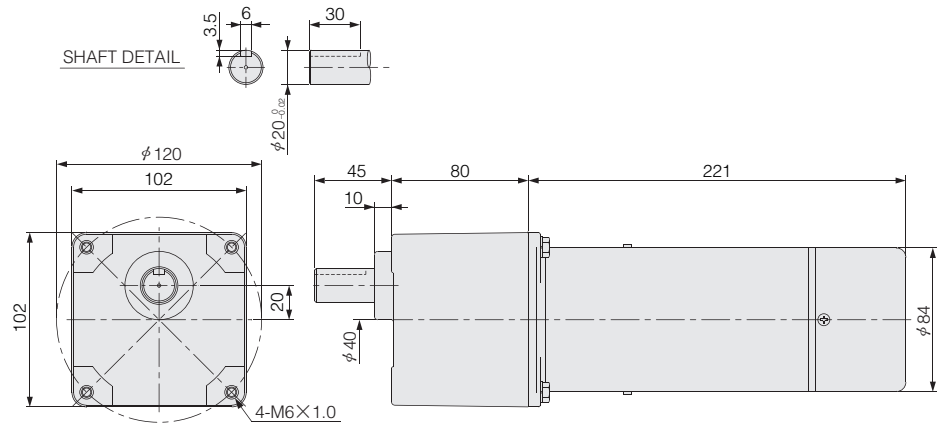
Please ask us about the gear ratio except for the above separately, too.

# D.C. GEARED MOTORS (SPUR GEAR)

## TD3391G



## 電磁ブレーキ付 [WITH BRAKE] TD3403G



無励磁作動ブレーキ [制動用] NEGATIVE ACTUATED TYPE ELECTROMAGNETIC BRAKE [FOR BRAKING]	Static Torque		Coil (20°C)		
	kgf·cm	N·m	Voltage	Amp	Watts
	10	1	24	0.41	10

### D.C. MOTORS

### SPEED-TORQUE CHARACTERISTICS

Part No.	Voltage	Torque		Current Amp	Speed r/min	Output Watts	Duty
		kgf·cm	N·m				
TD3391G	-12F	12	6.0	13	2000	123	Cont.
	-24F	24					
	-00F	100					
TD3403G	-240	24		6.5			

### MODEL-10K\_K D.C. GEARED MOTORS

### SPEED-TORQUE CHARACTERISTICS

Model Motor-Gear	Torque		Reduction Ratio	Speed r/min	Max Torque		Mass kg		
	kgf·cm	N·m			kgf·cm	N·m			
TD3391G-□□F	-10K5K	25.8	2.53	5	400	60	5.8		
	-10K10K	51.6	5.06	10	200	100	9.8		
	-10K15K	77.4	7.59	15	133	200	19.6		
	-10K20K	103	10.1	20	100				
	-10K25K	119	11.7	25	80	300	29.4		
	-10K30K	142	13.9	30	67				
TD3403G-240	-10K36K	171	16.8	36	56	400	39.2		
	-10K50K	237	23.2	50	40				
	-10K75K	329	32.3	75	27			500	49.0
	-10K90K	394	38.6	90	22				
	-10K100K	438	43.0	100	20				
	-10K150K	500	49.0	150	13				
-10K180K	180			11					

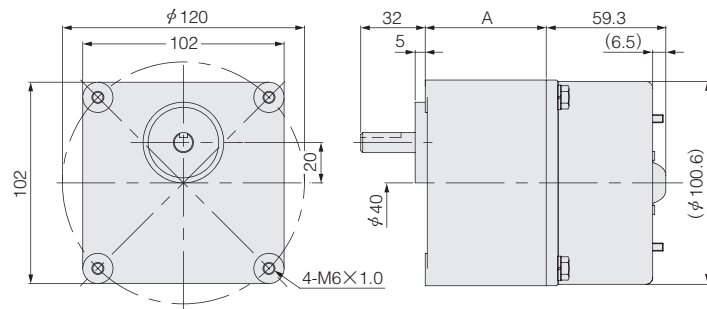
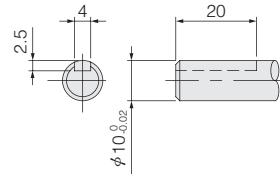
上記以外のギヤー比については別途ご相談ください。  
Please ask us about the gear ratio except for the above separately, too.

# D.C. FLAT GEARED MOTORS (SPUR GEAR)

TD2756G



SHAFT DETAIL



## D.C. MOTORS

## SPEED-TORQUE CHARACTERISTICS

Part No.	Voltage	Torque		Current	Speed	Output	Duty
		kgf·cm	N·m	Amp	r/min	Watts	
TD2756G	-12H	2.5	0.25	6.6	1800	46	Cont.
	-24H			3.3			

## MODEL - 10KG D.C. GEARED MOTORS

## SPEED - TORQUE CHARACTERISTICS

Model	Torque		Reduction Ratio	Speed	Gear Length-A	Mass	
	kgf·cm	N·m		r/min			
TD2756G-□□H	-10KG5	10	0.98	5	60	2.2	
	-10KG12.5	25	2.45	12.5			
	-10KG15	30	2.94	15			
	-10KG25	51	5.00	25		72	2.3
	-10KG30	61	5.98	30		60	
	-10KG50	91	8.92	50		36	
	-10KG75	100	9.81	75		24	2.45
	-10KG100			100		18	
	-10KG150			150		12	

上記以外のギヤー比も製作可能です。

The product of the gear ratio except for the above can be manufactured, too.